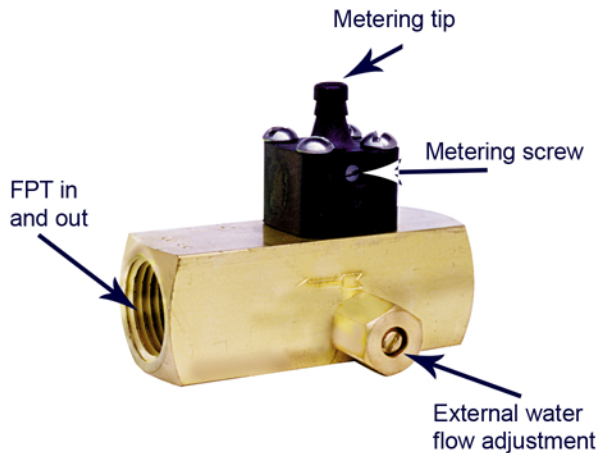


# B Series Injector

The B series injector is DEMA'S most adjustable injector. There is an external metering screw for the water flow as well as metering tip or metering screw chemical flow adjustment. Stainless steel construction offered for some sizes and harsher environments.



## Benefits:

- Low pressure loss (35% across injector)
  - Example: 100 PSI comes into the injector, 65 PSI will come out of the injector
- Metering knobs for various chemicals
  - Ryton (23-32T 3/8" barb, 24-32T, 1/4" barb)
  - SS (23-32ST 3/8" barb, 24-32ST 1/4" barb)
  - High Grade SS (24-32PS 1/4" barb)

B Series Injectors

Injector	NPT	Body Material	Metering Knob		Metering Tip Kit Included	Maximum Induction	Flow	
			Material	Type			Low @ 10 PSI	High @ 700 PSI**
202B	3/8"	Brass	Ryton	Screw	No	8 oz/min	.25 GPM	11 GPM
202BS			SS	Screw/Tips	No			
202BT			Ryton	Tips	Yes			
203B	3/8"	Brass	Ryton	Screw	No	16 oz/min	.50 GPM	20 GPM
203BP			SS*	Screw/Tips	No			
203BS			SS	Screw/Tips	No			
203BS.2		SS	Screw/Tips	No				
203BST		Brass	SS	Tips	Yes			
203BT			Ryton	Tips	Yes			
204B	1/2"	Brass	Ryton	Screw	No	36 oz/min	2.0 GPM	35 GPM
204BP			SS*	Screw/Tips	No			
204BS			SS	Screw/Tips	No			
204BS.2		SS	Screw/Tips	No				
204BT		Brass	Ryton	Tips	Yes			
206B	3/4"	Brass	Ryton	Screw	No	42 oz/min	3.6 GPM	60 GPM
206BS			SS	Screw/Tips	No			
206BSP			SS*	Screw/Tips	No			
206BST			SS	Tips	Yes			
206BT			Ryton	Tips	Yes			

\*700 PSI recommended use of stainless steel metering knob

\*\* High grade SS applies to metering screw for very corrosive chemicals

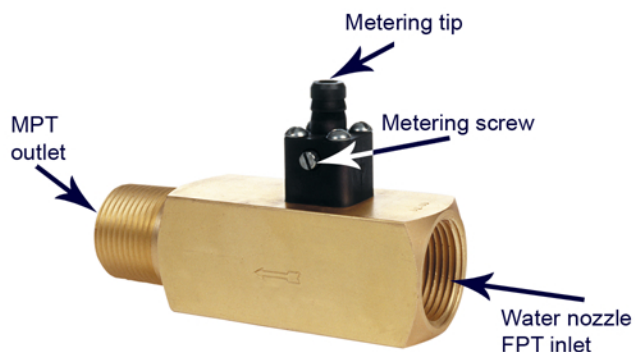


# C Series Injector

The C series injector is DEMA'S standard injector. There are many options to use this injector in a variety of ways, as a stand-alone unit with the proper corrosive resistance.

## Benefits:

- Low pressure loss (35% across injector)
- EX. 100 PSI comes into the injector, 65 PSI will come out of the injector
- Metering knobs for various chemicals
- Ryton (23-32T 3/8" barb, 24-32T, 1/4" barb)
- SS (23-32ST 3/8" barb, 24-32ST 1/4" barb)
- High Grade SS (24-32PS 1/4" barb)



C Series Injectors

Injector	NPT	Body Material	Metering Knob		Metering Tip Kit Included	Maximum Induction	Flow	
			Material	Type			Low @ 15 PSI	High @ 700 PSI***
200.3C	1/8"	Brass	Ryton	Screw	No	3 oz/min	.10 GPM	1.1 GPM
200.3CP			SS*	Screw/Tips	No			
200.3CS			SS	Screw/Tips	No			
200.3CST			SS	Tips	Yes			
200.3CT			Ryton	Tips	Yes			
200C	1/8"		Ryton	Screw	No	5 oz/min	.20 GPM	2.2 GPM
200CS			SS	Screw/Tips	No			
200CSP			SS*	Screw/Tips	No			
200CST			SS	Tips	Yes			
200CT			Ryton	Tips	Yes			
201C	1/8"		Ryton	Screw	No	7 oz/min	.39 GPM	4.3 GPM
201CHT			Ryton	Tips**	Yes			
201CS			SS	Screw/Tips	No			
201CSP			SS*	Screw/Tips	No			
201CST			SS	Tips	Yes			
201CT	Ryton		Tips	Yes				
202C	1/4"		Ryton	Screw	No	11 oz/min	.79 GPM	8.9 GPM
202CS			SS	Screw/Tips	No			
202CSP			SS*	Screw/Tips	No			
202CT			Ryton	Tips	Yes			
203C	3/8"	Ryton	Screw	No	21 oz/min	1.6 GPM	18 GPM	
203CP		SS*	Screw/Tips	No				
203CT	Ryton	Tips	Yes					
204C	1/2"	Ryton	Screw	No	30 oz/min	3.2 GPM	36 GPM	
204CT		Ryton	Tips	Yes				
206C	3/4"	Ryton	Screw	No	55 oz/min	6.3 GPM	69 GPM	
206CS		SS	Screw/Tips	No				
206CT		Ryton	Tips	Yes				
208C	1"	Ryton	Screw	No	60 oz/min	13 GPM	99 GPM	
208CS		SS	Screw/Tips	No				
208CST		SS	Tips	Yes				
208CT		Ryton	Tips	Yes				

\* High grade metering screw for corrosive chemicals

\*\*700 PSI flow or greater, SS metering knob recommended