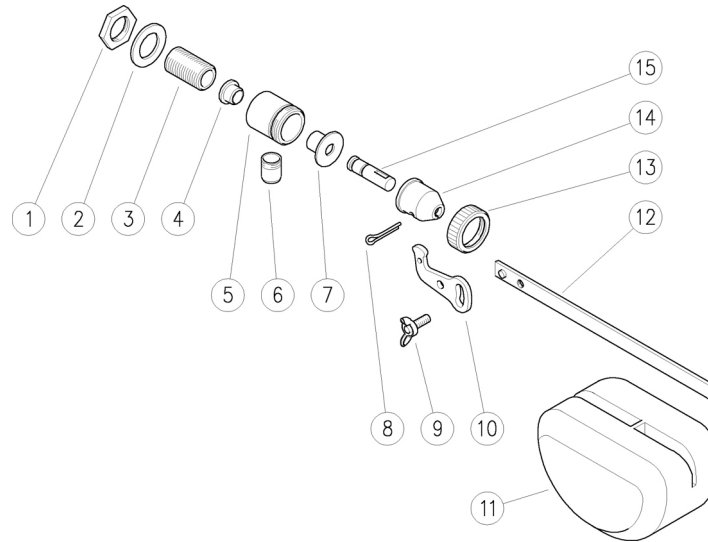


29.0160.00 RGO Float valve,brass 3/8M Bsp  
 29.0160.10 RGO Float valve,brass 1/2M Bsp

29.0160.20 RGO Float valve,brass 3/4M Bsp  
 29.0160.30 RGO Float valve,brass 1/2F Bsp



Pos.	P/N	Description	Q.ty	K1
1	29.0171.31	Nut, brass, 3/8F Bsp (1)	1	
1	29.0175.31	Nut, 1/2F Bsp brass (2)	1	
1	29.0188.31	Nut, 3/4F Bsp brass (3)	2	
2	29.0176.81	Front seal, 17x28x2 mm NBR (1)	1	
2	29.0177.81	Front seal, 19x30x2 mm black (2)	1	
2	29.0189.81	Front seal, 26x36x2 mm NBR (3)	1	
3	29.0172.36	Coupling, 3/8M Bsp brass (1)	1	
3	29.0173.31	Coupling, 3/8M-1/2M Bsp brass (2)	1	
3	29.0179.31	Coupling, 3/8M-3/4M Bsp brass (3)	1	
3	29.0217.31	Coupling, 3/8M-1/2F Bsp brass (4)	1	
4	29.0165.84	Seat -RGO,	1	•

Pos.	P/N	Description	Q.ty	K1
5	29.0161.31	Housing -RGO, M24x1,5M-3/8F Bsp brs.	1	
6	29.0162.36	Drain tube, brass	1	
7	29.0166.81	Front gasket, CR	1	•
8	11.0549.01	Cotter pin 3x20 mm	1	
9	12.0150.05	Wing nut, M5x10 brass	1	
10	29.0168.35	Transmission plate, brass	1	
11	29.0191.84	Float valve, PE-HD grey	1	
12	29.0190.31	Rod -RGO, brass	1	
13	29.0163.36	Hand nut, M24x1,5 F brass	1	
14	29.0169.31	Cover, brass	1	
15	29.0164.84	Piston RGO black	1	•

Kit	P/N	Description	Q.ty
K1	29.0199.24	Spares kit -RGO, 3x1pcs.	1

(1) 29.0160.00 (2) 29.0160.10 (3) 29.0160.20 (4) 29.0160.30