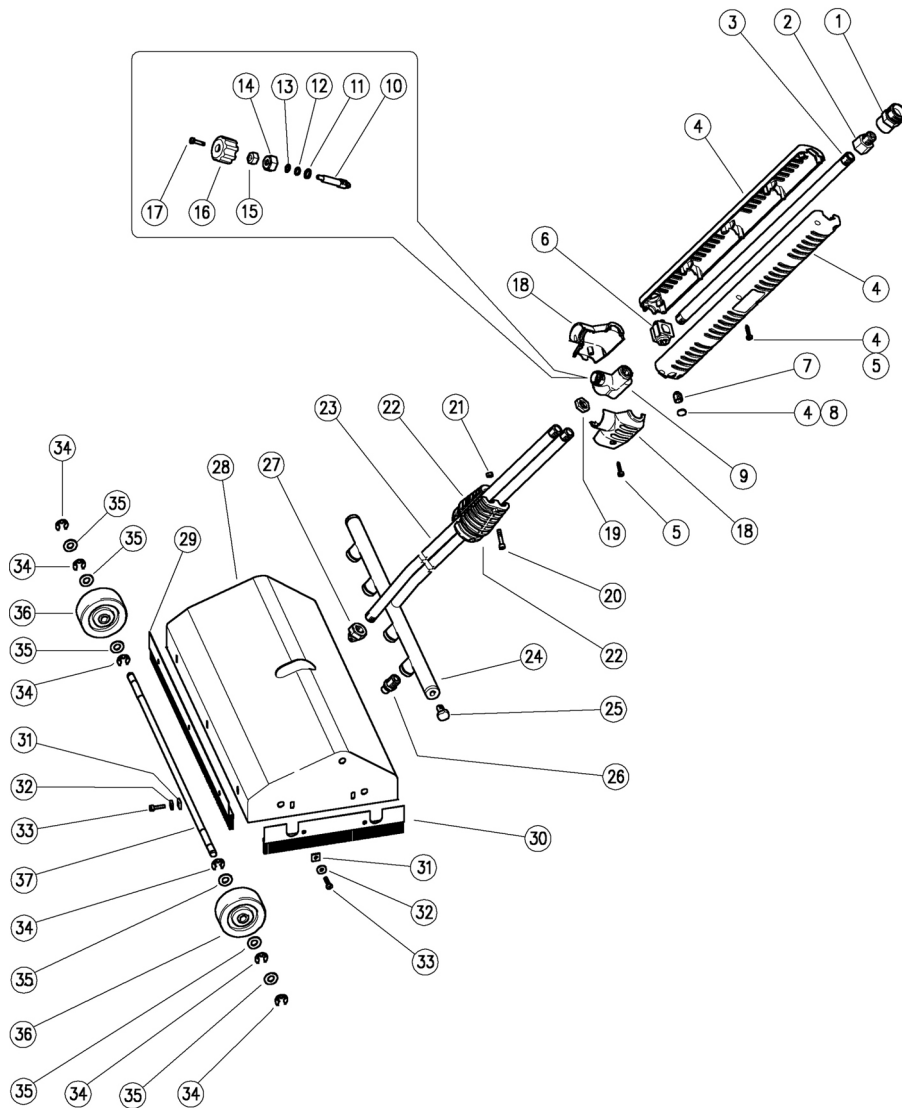


29.0600.00 LP1 floor cleaner, sst, A M22, 410mm



Pos.	P/N	Description	Q.ty	K1
1	26.1032.31	AR5 A M22 screw-type nipple-1/4F Bsp	1	
2	40.5008.31	Reduct,brass 1/4M Bspt-1/4F Bsp	1	
3	40.0314.56	Tube, 1/4Bsp MM 377mm Sst.	1	
4	40.0308.24	Casing-kit -S3, black+screws+Lance Plug	1	
5	16.3077.00	S/tapping screw, DIN7981 3,5x18 mm	7	•
6	40.0304.84	Tube fastener, plast.	1	
7	16.2230.00	Set screw, DIN916 M10x8 mm z.pl.	1	
8	40.0303.84	Lance Plug, PA black	1	
9	41.0401.35	Valve housing -LD, 1/4FFF Bsp brass	1	•
10	41.0951.51	Shutter, LD Sst.	1	•
11	14.3643.00	Washer, 8,2x12x1,5 mm Cu	1	•
12	10.3170.00	O-ring, 2,62x7,6 mm	1	•
13	10.4020.00	Back-up ring, 8x12,6x1,2 mm	1	•
14	41.0408.31	Ring nut, M18x1,5 brass	1	•
15	29.0924.31	Groove nut, brass	1	•
16	29.0931.84	Knob, PA black	1	•
17	16.1840.00	Screw, DIN7985 M4x14 mm z.pl.	1	•
18	41.0424.24	Casing-kit -LD9-1/4" +screws	1	•
19	29.0608.31	Locknut, 1/4F Bsp brass	1	

Pos.	P/N	Description	Q.ty	K1
20	16.1855.00	Screw, DIN912 M4x20 mm z.pl.	2	
21	11.4513.05	Hex. nut M4	2	
22	41.0416.84	Semi-shell, 1/4" PA black	2	
23	29.0629.56	Low pressure tube, Sst.	1	
24	29.0615.21	High pressure branch -LP1, Sst.	1	
25	29.0616.51	Screw M 8mm, Sst.	2	
26	16.1380.15	Nozzle, 1/4 HP +strainer	4	
27	29.0633.51	Low pressure nozzle, Sst.	1	
28	29.0605.21	Casing -LP1, Sst.	1	
29	29.0601.23	Brush, 390 mm Sst.+PA white	2	
30	29.0602.23	Brush, 184 mm Sst.+PA white	2	
31	11.4512.00	Square nut M4	10	
32	14.3514.00	Washer, 4,3x12x1 mm Sst.	10	
33	16.1840.10	Screw, DIN7985 M4x14 mm Sst.	10	
34	10.0996.07	Snap ring, A 7 Sst.	12	
35	14.3650.00	Washer, 8,4x17x1,6 mm Sst.	12	
36	14.5060.06	Rubber wheel, d.60 mm	4	
37	29.0607.51	Wheel shaft, 8x411 mm Sst.	2	

Kit	P/N	Description	Q.ty
K1	41.0956.24	Valve-Kit -LD9-LP, complete	1