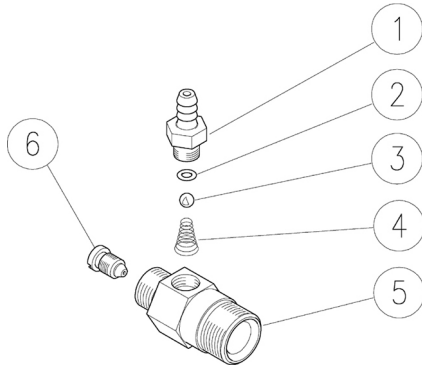


21.0030.18 Inject.,fix.,3/8M Bsp-M22 1,8mm nzl

21.0030.21 Inject.,fix.,3/8M Bsp-M22 2,1mm nzl



21.0030.23 Inject.,fix.,3/8M Bsp-M22 2,3mm nzl

Pos.	P/N	Description	Q.ty	K1
1	21.0003.31	Hose barb, 8 - M12x1 mm brass	1	
2	10.3049.00	O-ring, 1,78x5,28 mm Vi 70	1	•
3	14.7420.01	Ball, 7/32" Sst. Aisi 316	1	•
4	21.0160.51	Tapered spring, Sst. -inject.	1	•
5	21.0166.31	Inject.housing, 3/8M Bsp-M22x1,5 M brs.	1	
6	21.0006.51	Nozzle, M8x1 - 1,2 mm Sst.	1	
6	21.0007.51	Nozzle, M8x1 - 1,5 mm Sst.	1	
6	21.0002.51	Nozzle, M8x1 - 1,8 mm Sst. (1)	1	
6	21.0004.51	Nozzle, M8x1 - 2,1 mm Sst. (2)	1	
6	21.0157.51	Nozzle, M8x1 - 2,3 mm Sst. (3)	1	

Kit	P/N	Description	Q.ty
K1	21.0010.24	Spares kit -fix.inject. 3x10 pcs.	1

(1) 21.0030.18 (2) 21.0030.21 (3) 21.0030.23